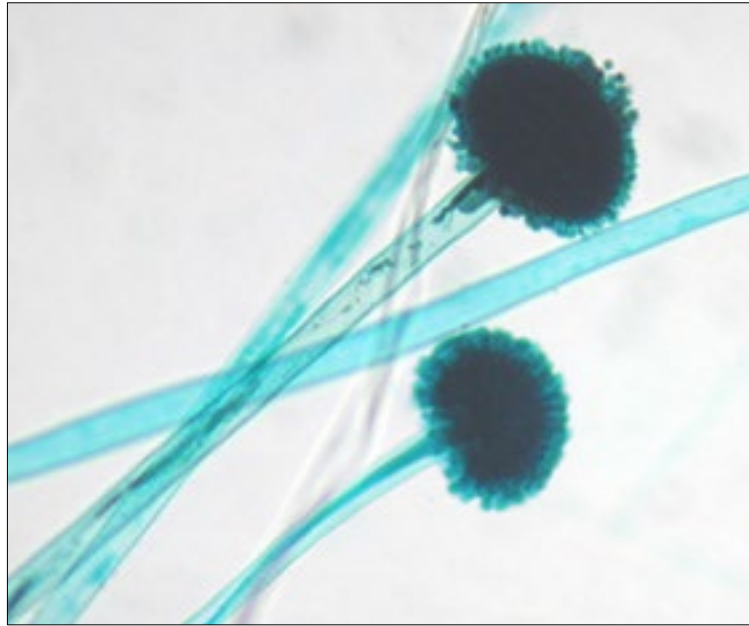


1. A single filament of a mold is called a _____, while The total mass of hyphae is termed the _____.

A. mycelium; hyphae

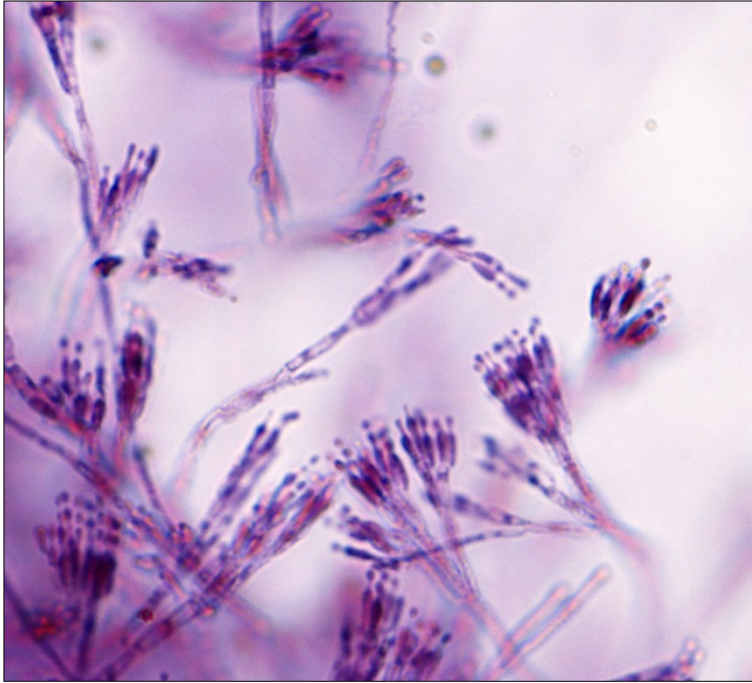
B. hyphae; mycelium

C. conidiophore; conidiospore



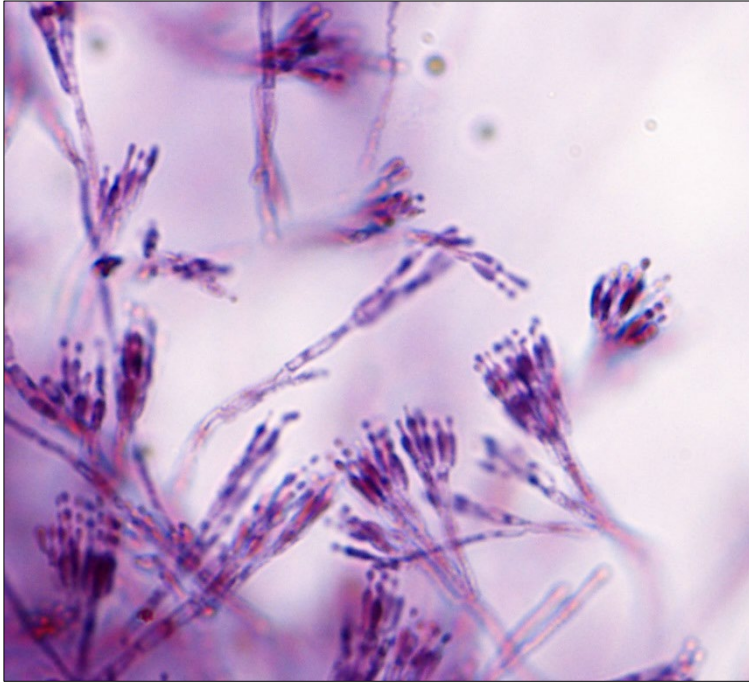
2. What mold is this?

- A. *Aspergillus*
- B. *Rhizopus*
- C. *Penicillium*



3. What mold is this?

- A. *Aspergillus*
- B. *Rhizopus*
- C. *Penicillium*



4. Describe the asexual spores.

- A. conidiospores on a vesicle
- B. sporangiospores
- C. arthrospores
- D. conidiospores on phialides



5. What mold is this?

A. *Aspergillus*

B. *Rhizopus*

C. *Penicillium*

6. Molds that cause superficial mycoses of the hair, skin, and nails and utilize the protein keratin are called _____.

- A. dimorphic fungi
- B. dermatophytes
- C. mycoplasmas

7. Fungi that grow as a mold outside the body but grow as a yeast-like form inside the body are called _____.

- A. dimorphic fungi
- B. dermatophytes
- C. mycoplasmas



8. This is DTM. What type of organism is this?

- A. A pathogenic yeast.
- B. A dimorphic fungus.
- C. A nonpathogenic mold.
- D. A dermatophyte.

9. Found in the southwestern US; mold form produces arthrospores; produces endosporulating spherules in the lungs. This best describes which fungal disease?

- A. coccidioidomycosis
- B. histoplasmosis
- C. blastomycosis
- D. aspergillosis