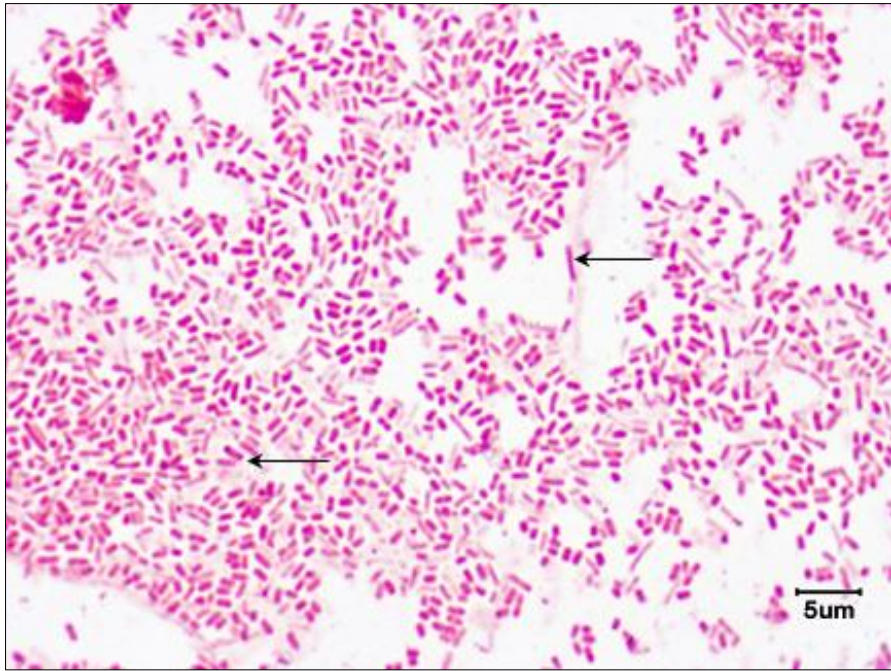


1. This electron micrograph shows:

_____ .

- A. an acid-fast cell wall.
- B. a Gram-positive cell wall.
- C. a Gram-negative cell wall.



2. This bacterium was stained with the Gram stain procedure. It is _____.

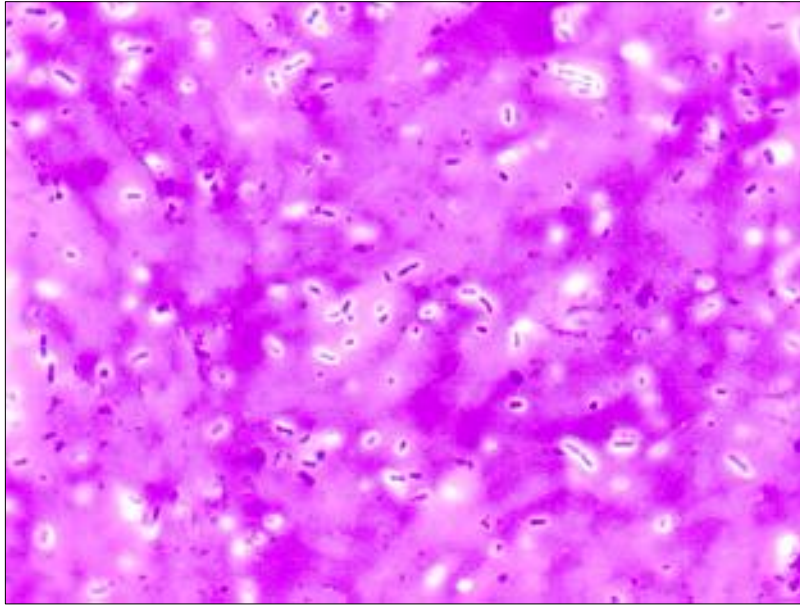
- A. Gram-negative
- B. Gram-positive

3. The reason Gram-positive bacteria appear purple after gram staining is that:

A. the alcohol and acetone dehydrates the many layers of peptidoglycan.

B. their cytoplasm has a negative charge.

C. the alcohol and acetone dissolves away their outer membrane.



4. What structure is seen on this slide?

- A. A bacillus.
- B. A Gram-positive bacterium.
- C. A capsule.
- D. An endospore.

5. The function(s) of a bacterial capsule (glycocalyx) is to _____.

A. adhere to surfaces and resist phagocytosis.

B. resist heat and toxic chemicals.

C. resist osmotic lysis.