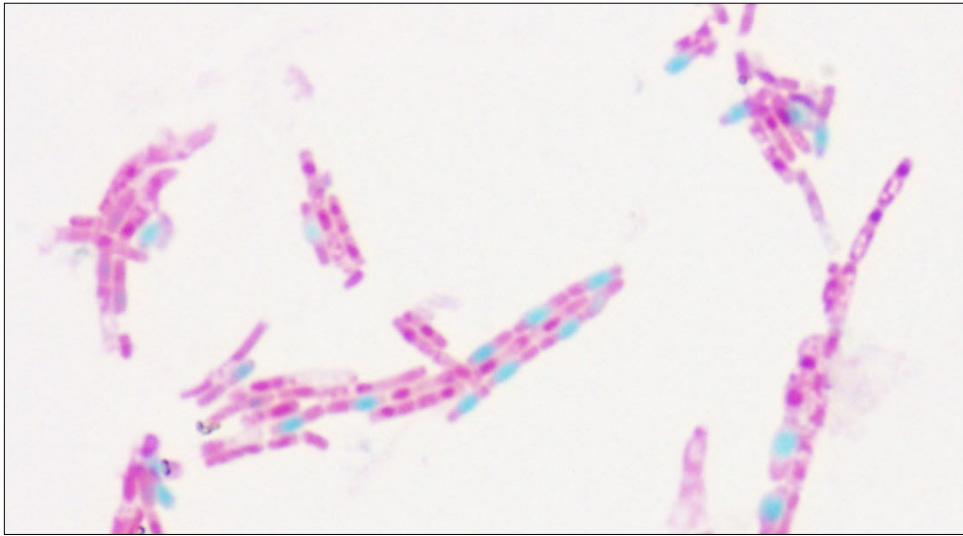


1. Two genera of bacteria that produce endospores are _____ and _____.

A. *Enterobacter* and *Escherichia*

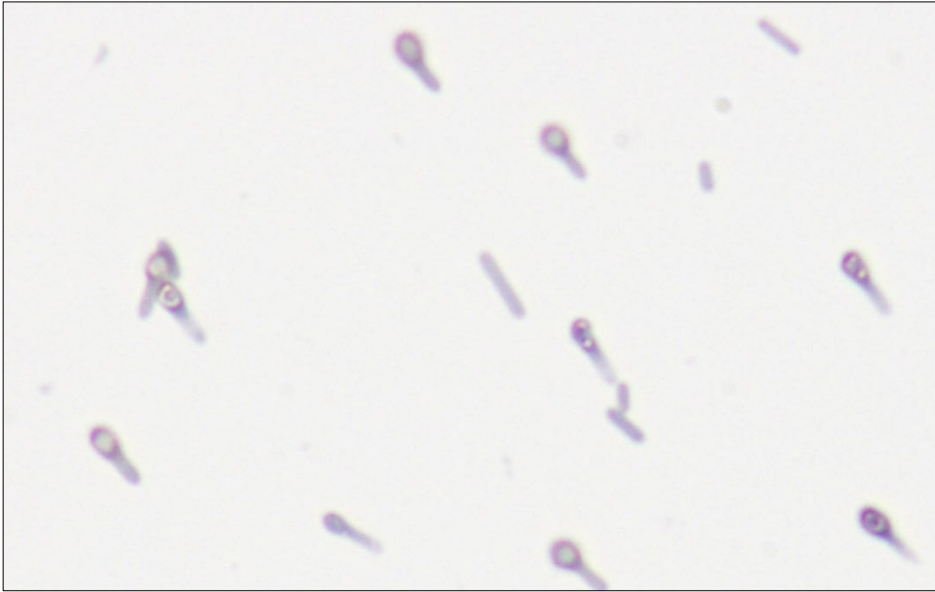
B. *Bacillus* and *Clostridium*

C. *Pseudomonas* and
Staphylococcus



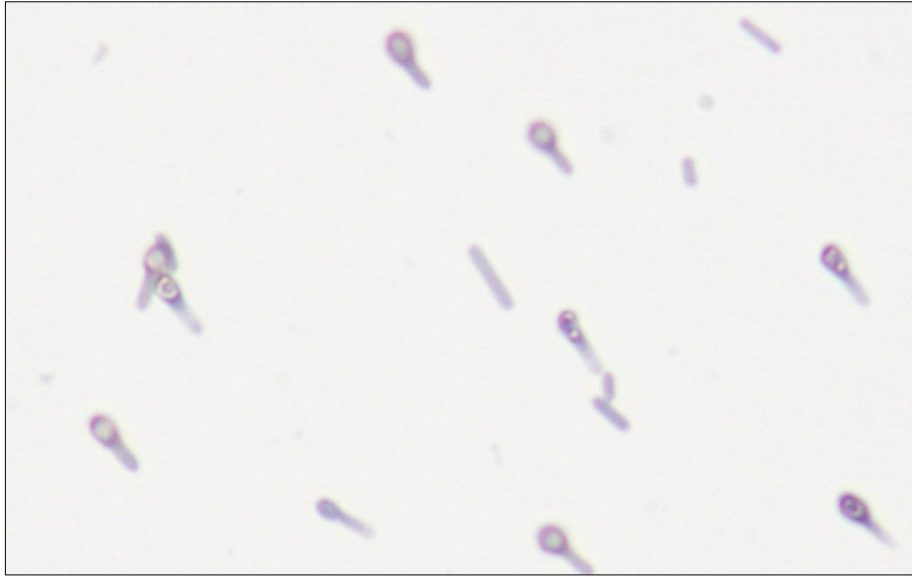
2. What bacterial structure is evident in this photomicrograph?

- A. streptobacillus
- B. capsule
- C. endospore
- D. *Bacillus*



3. What bacterial structure is evident in this photomicrograph?

- A. endospore
- B. *Clostridium*
- C. flagellum
- D. streptobacillus



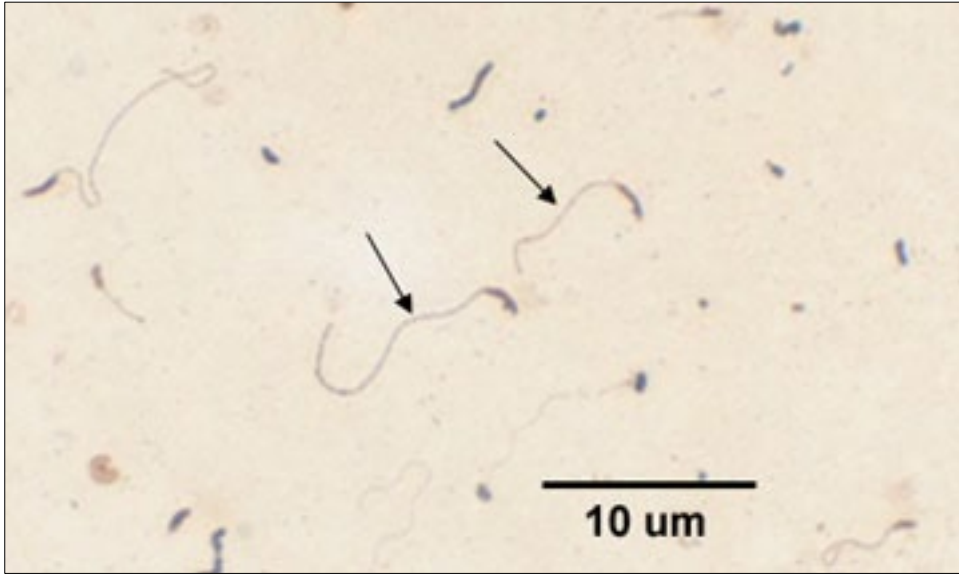
4. What is the genus of this bacterium?

- A. Endospore
- B. *Bacillus*
- C. *Clostridium*
- D. Flagella
- E. *Pseudomonas*



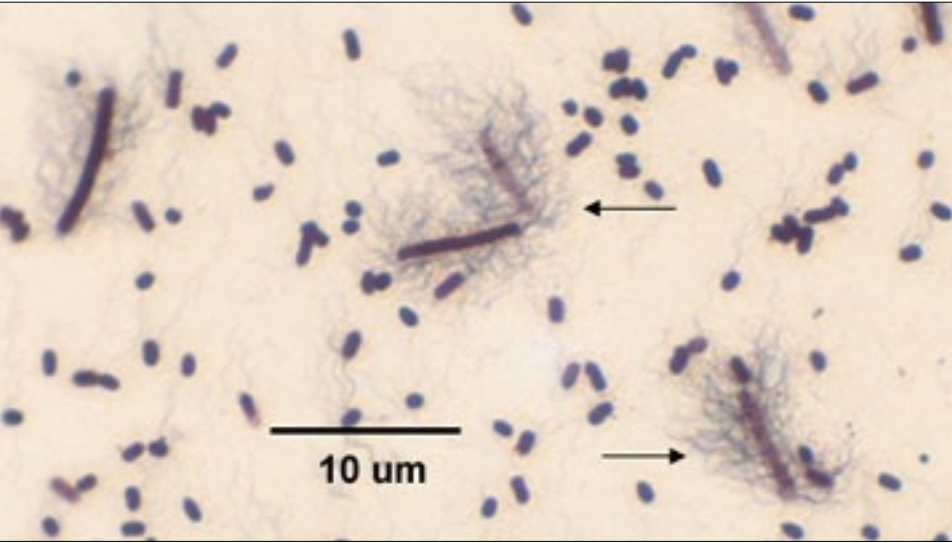
5. Is this organism motile or non-motile?

- A. motile
- B. non-motile
- C. cannot tell from this picture



6. What is the arrangement of flagella seen here?

- A. monotrichous
- B. peritrichous
- C. lophotrichous
- D. amphitrichous



7. What is the arrangement of flagella seen here?

- A. monotrichous
- B. peritrichous
- C. lophotrichous
- D. amphitrichous